



**SECURITY
LICENSING
PERFECTION IN PROTECTION**

From Industrial Tokens to International Travel

WIBU-SYSTEMS Introduction



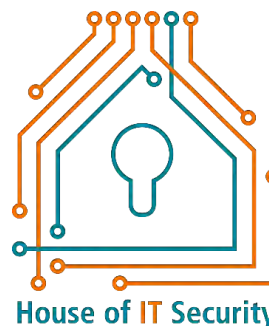
Oliver Winzenried
CEO

WIBU-SYSTEMS invests in Karlsruhe



- Founded in 1989, headquartered in Karlsruhe, Germany
- Subsidiaries in the USA, China, and Japan, sales offices all over Europe
- Owner-managed, independent, more than 140 employees and 50% export
- International patents, R&D collaborations, active role in standardization & industry associations, ISO 9001:2015 and ISO 27001:2013 certified
- Envisioning digital sovereignty through strong collaboration

- House of IT-Security
- IT Security Club

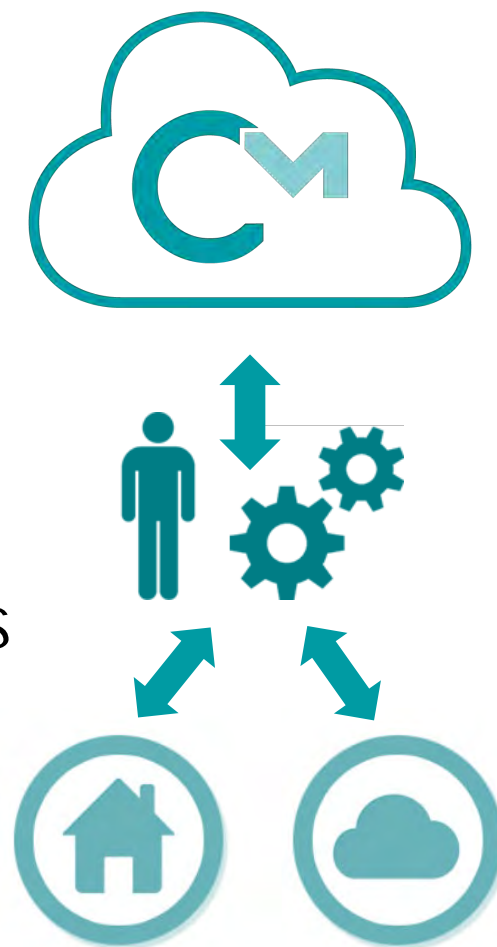


- Global market leader for Protection, Licensing & Security
 - Comprehensive solution
 - Technology leadership
 - Future-proof through research and development:
e.g. Artificial Intelligence and Post Quantum Cryptography
 - Our contribution to people, the environment, and society
- CodeMeter as de facto standard for licensing
 - Expansion of our leadership position and market share



**SECURITY
LICENSING
PERFECTION IN PROTECTION**

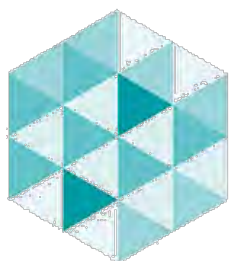
- Highly scalable solution for licensing in the cloud
- Highly available solution as compatible alternative to dongle and activation
- Ideal for IIoT, mobile applications, and applications in the cloud



- Protection for server-side and client-side JavaScript applications
- Feature based Licensing
- IP protection and anti-debugging protection through encryption



- Unbreakable software protection is an impossible goal
- But: Software protection should not be crackable without exceptional efforts
- Compliant with Kerckhoffs' principle
- Comparable and verifiable
- Automated (preventing individual errors)



BLURRY
BOX



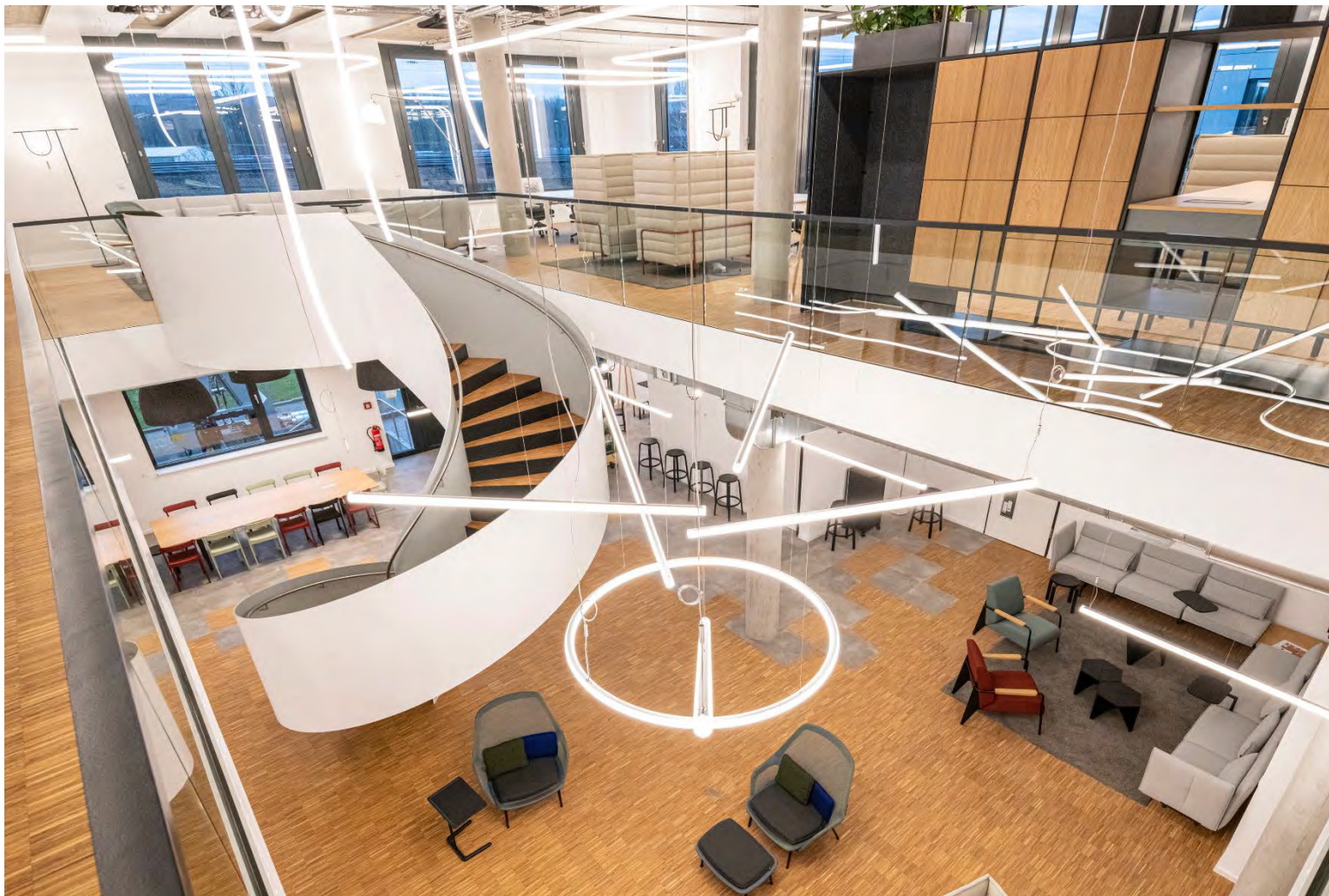
- IT Security focused
- Target group:
 - Research community, public authorities, start-ups, established companies
- Innovation Manager
 - Workshops
 - Funded R&D cooperations
 - Active support



Impressions from the IT Security Club



Impressions from the IT Security Club

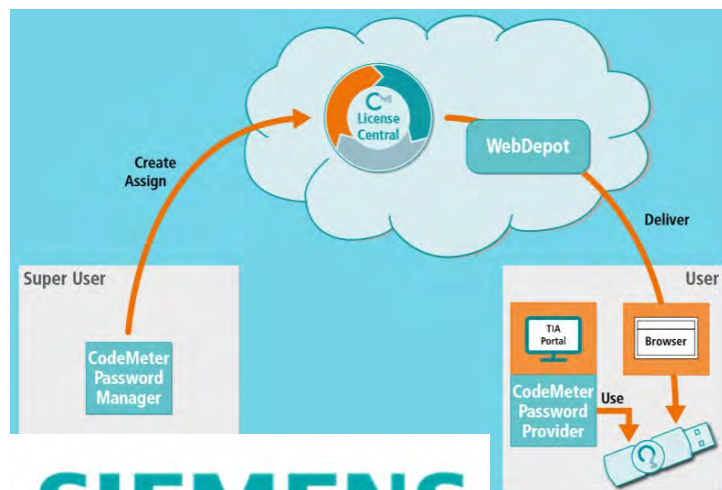


- High quality workplace, all inclusive
 - Exclusive ambience, high end furniture, flowers, Artemide lights, Work Café
 - First class building automation, fiber optic Internet, cable and wifi 6, access 24/7
 - No hidden costs: Cleaning, heating, cooling, air, Internet, power, drink water taxes
- Flexible renting options
 - Closed offices, Private Desk, Fix Desks, Flex Desks
- Innovation Management, Workshops
 - Secure Software Development lifecycle, AI, PQC, ...
- itsc@itsec.house



CodeMeter Use Cases

Benefits in use cases of ISVs and
IDMs in different industries



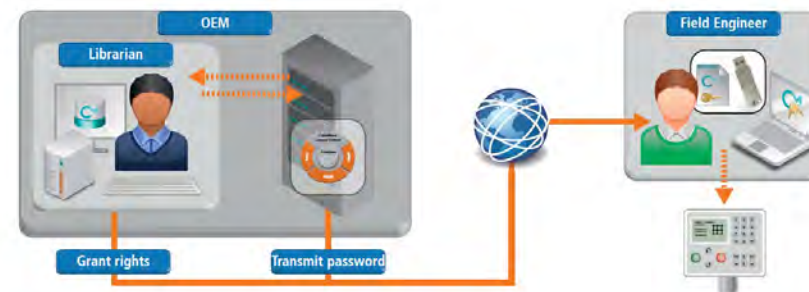
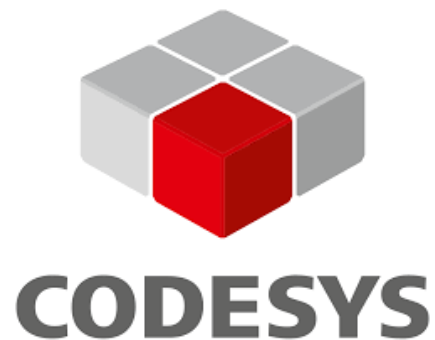
SIEMENS



B&R

RA Rockwell Automation

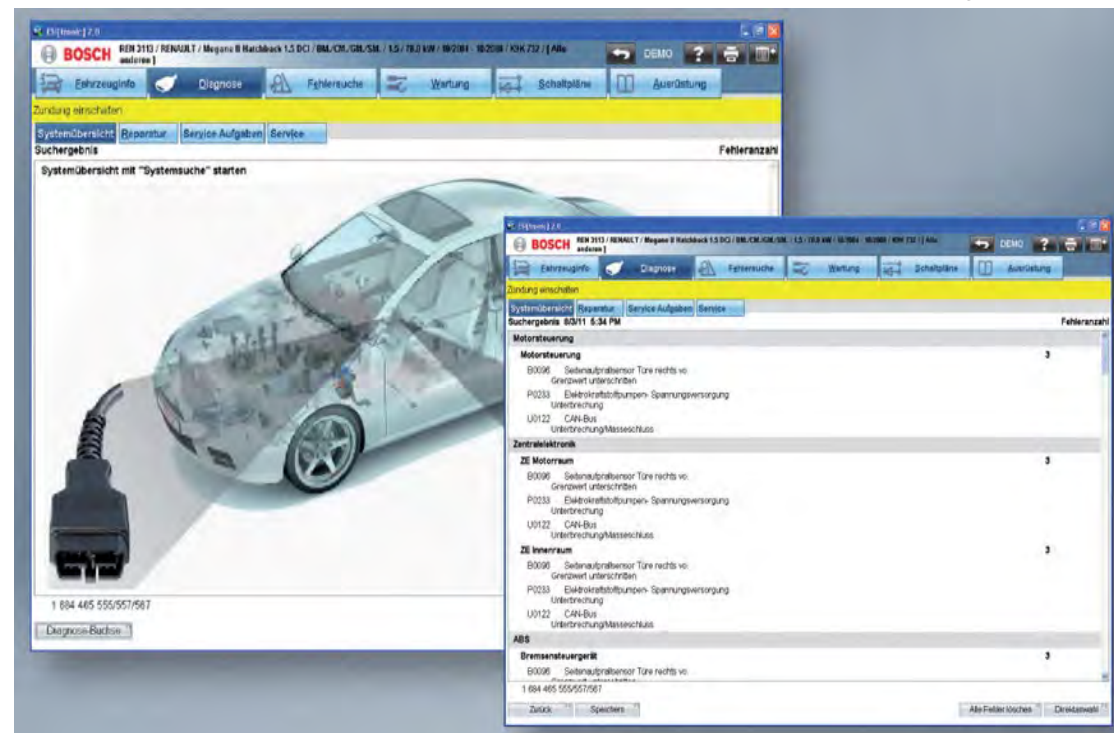
Rockwell Software
Studio 5000

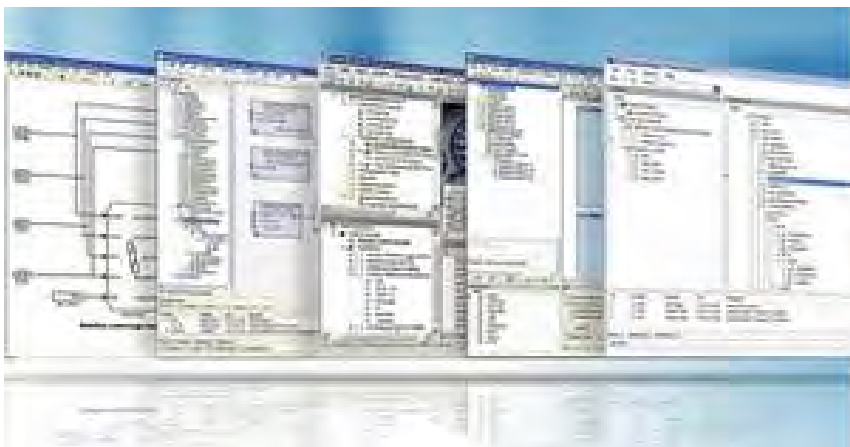


■ BOSCH

- Bosch uses a license-based subscription model for their diagnostic software solutions for the aftermarket workshop business, where experts provide advice, repair, and maintenance services for all makes.
- Car parameter database is protected with CodeMeter
- Using CmActLicenses, AxProtector, AxProtector Java, Consulting Services

ESI [tronic] by Bosch





dSPACE



VECTOR





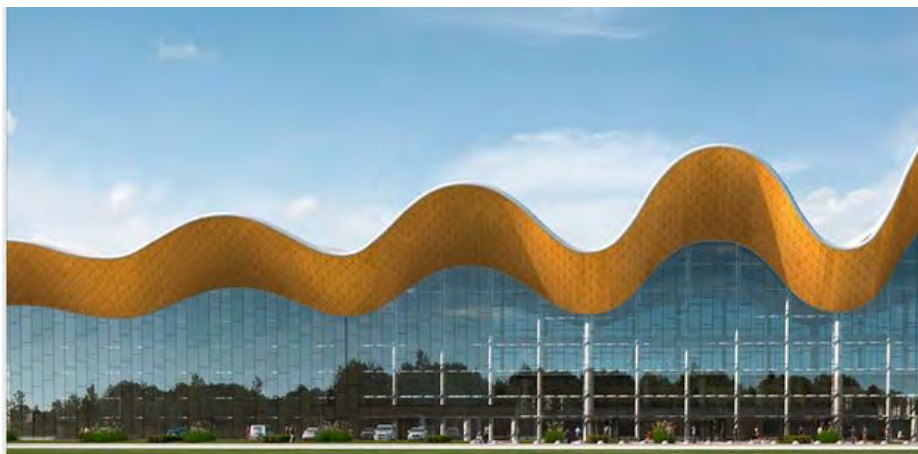
TRUMPF



DMG MORI

- Subscription models
- Modular configuration

GRAPHISOFT
A NEMETSCHEK COMPANY



- Crossing the borders:
 - Protection and Licensing of their Deep Learning Software (former company VIDI) using CmDongles
 - CmASIC embedded in their devices (cameras, lasers, ...) to protect on-board software and data



AGFA Healthcare Easy Payment scheme for computed radiography in India



- Modular licensing of modelling software
 - IP Protection: anti-counterfeiting
 - Tamper Protection: FDA, MPG
 - Pay-per-Use
-
- Business process integration with CodeMeter License Central



Thank you!



Europe: +49-721-931720
USA: +1-425-7756900
China: +86-21-55661790
Japan: +81-45-565-9710

<https://www.wibu.com>

info@wibu.com